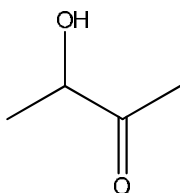


## Trabajo Práctico Número 2

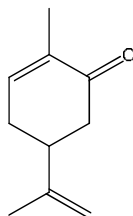
### Espectroscopía infrarroja (FT-IR)

El compuesto analizado por cada grupo durante el práctico es alguno de los siguientes:

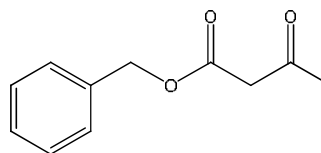
3-hidroxi-2-butanona



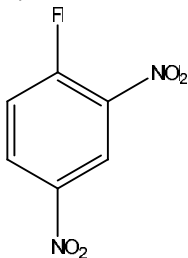
carvona



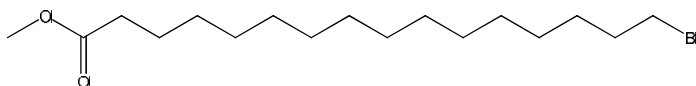
bencil-acetoacetato



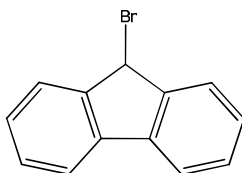
2,4-dinitro-fluorobenceno



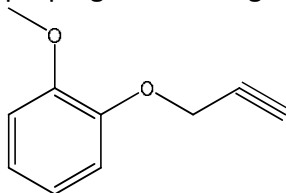
16-bromo-hexadecanoato de metilo



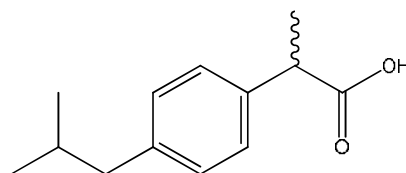
9-bromo-fluoreno



propargilo éter del guayacol



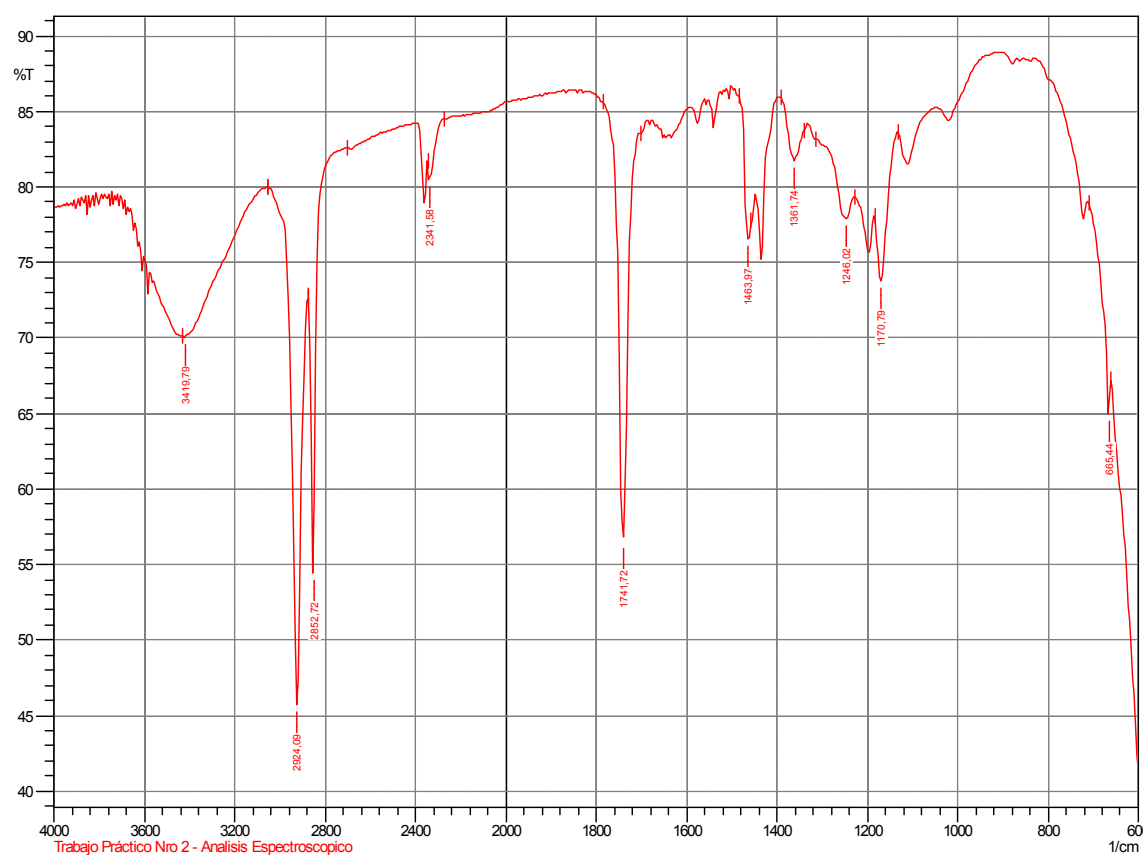
ibuprofeno



Identifique el compuesto preparado asignando las bandas más importantes de su espectro IR.

## Muestras analizadas

### Muestra Grupo 1:



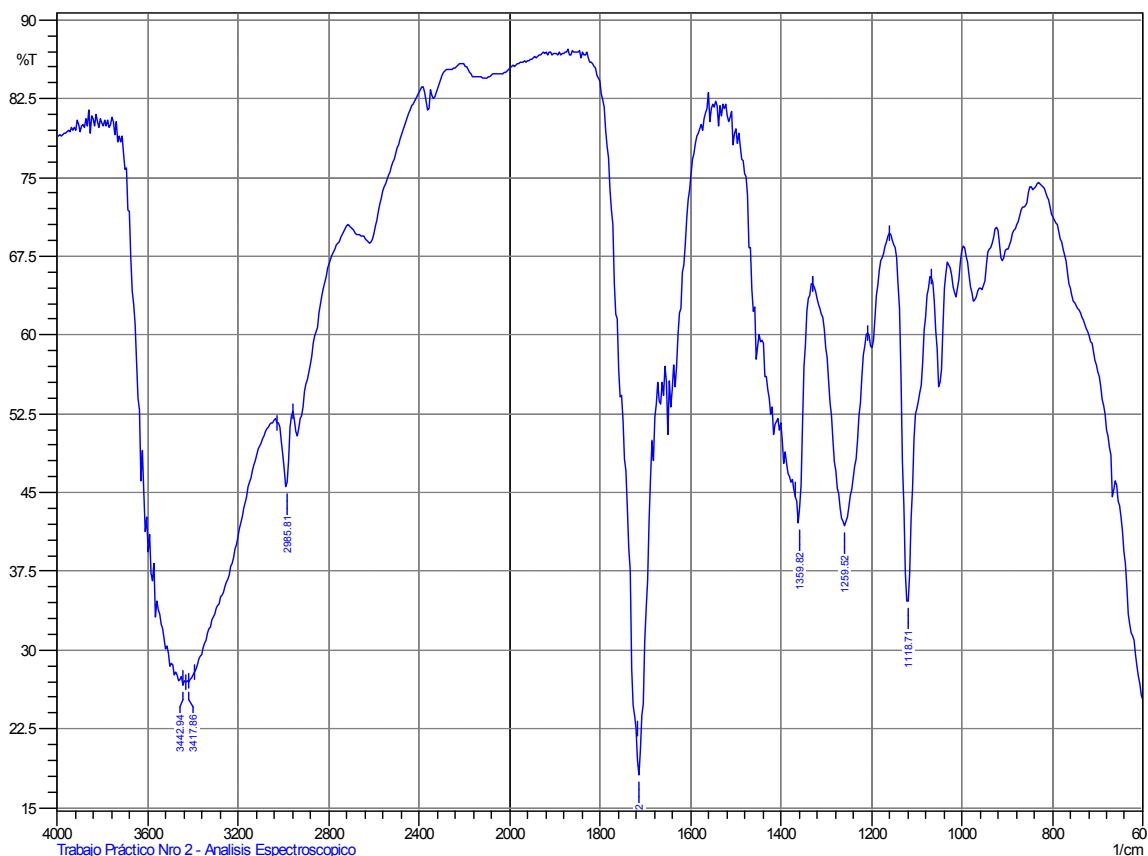
Banda ( $\text{cm}^{-1}$ )	Altura	Altura corregida
665,44	35,025	3,202
1170,79	26,221	5,747
1246,02	22,083	2,236
1361,74	18,257	2,955
1463,97	23,431	3,036
1741,72	43,454	28,012
2341,58	19,480	1,459
2852,72	45,550	19,679
2924,09	54,302	28,939
3419,79	29,914	0,331

Facultad de Ciencias  
Bioquímicas y  
Farmacéuticas


## Análisis Espectroscópico

### Licenciatura en Química

### Muestra Grupo 2:




Banda ( $\text{cm}^{-1}$ )	Altura	Altura corregida
1118.71	65.379	33.229
1259.52	58.128	20.305
1359.82	57.819	8.038
1714.72	81.878	7.515
2985.81	54.491	6.777
3417.86	73.268	0.491
3442.94	73.303	0.592



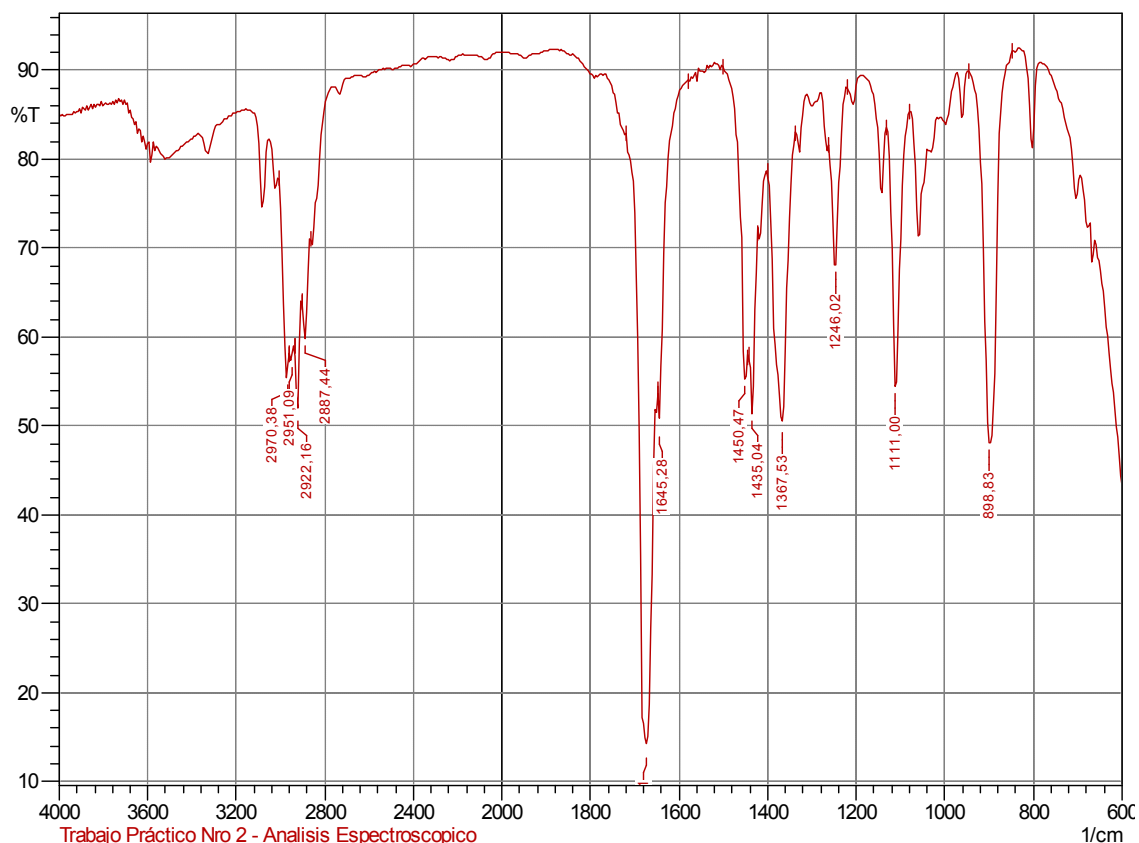
Facultad de Ciencias  
Bioquímicas y  
Farmacéuticas

## Análisis Espectroscópico


### Licenciatura en Química



### Muestra Grupo 3:




Banda (cm <sup>-1</sup> )	Altura	Altura corregida
898,83	51,926	42,903
1111,00	45,565	29,768
1246,02	31,957	16,033
1367,53	49,978	30,830
1435,04	48,694	11,726
1450,47	44,679	5,734
1645,28	50,358	5,027
1674,21	86,488	51,015
2887,44	40,251	6,819
2922,16	48,613	9,685
2951,09	42,694	1,195
2970,38	44,541	6,746

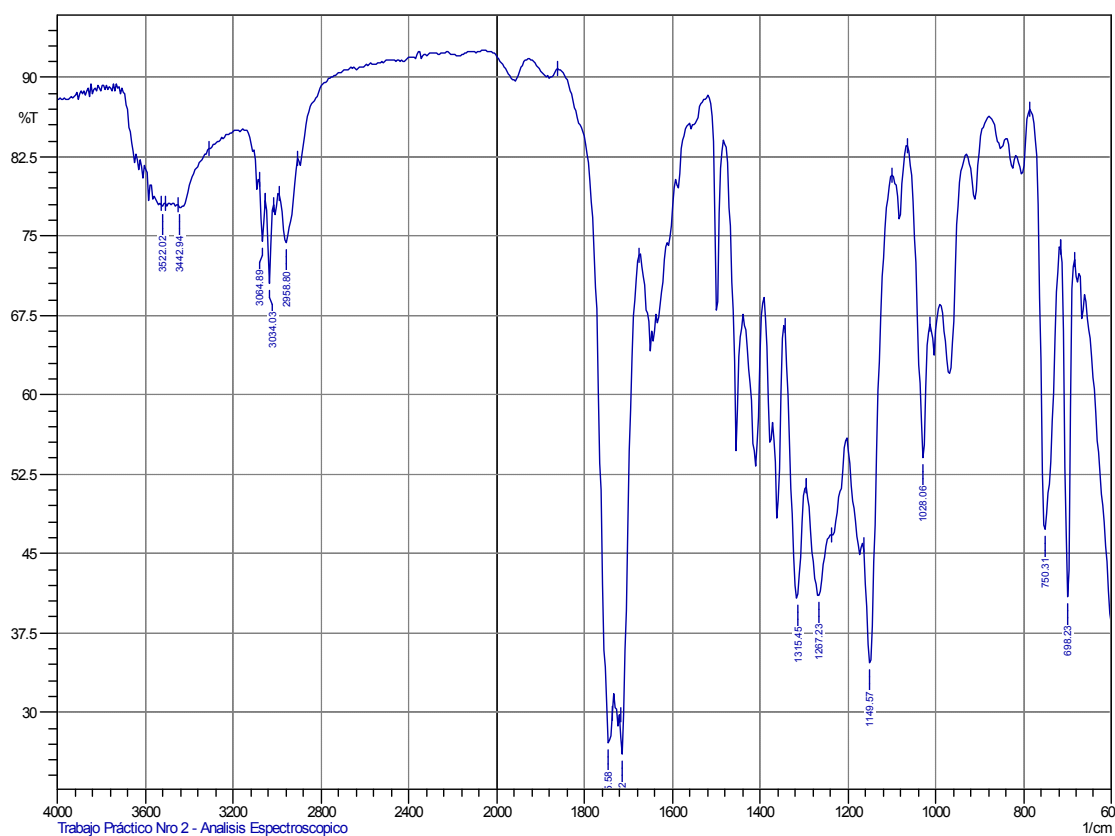


Facultad de Ciencias  
Bioquímicas y  
Farmacéuticas

## Análisis Espectroscópico Licenciatura en Química



### Muestra Grupo 4:



Banda (cm <sup>-1</sup> )	Altura	Altura corregida
1149.57	65.267	19.357
1714.72	73.951	7.702
1745.58	72.841	7.363
698.23	59.143	32.481
750.31	52.668	33.154
1028.06	45.946	17.658
1267.23	58.977	8.081
1315.45	59.151	16.652
2958.8	25.654	5.908
3034.03	29.439	7.644
3442.94	22.338	0.514
3522.02	22.239	0.377